



廈門大學

XIAMEN UNIVERSITY



## Prospectus for Overseas Students Overseas Education College



An XMUOEC alumnus of 1988  
"An Old China Hand"  
A Chinese language student of Overseas Education College in 1988  
The first foreigner to settle in Xiamen  
The first permanent foreign resident in Fujian Province  
One of the earliest foreign MBA teachers in China  
One of the "Touching China" candidates  
Received Friendship Award from Premier Li Peng  
Received Fujian Province Friendship Award

Publications: Amoy Magic, Magic Fujian, Discover Gulangyu  
<http://www.amoymagic.com>  
[amoybill@gmail.com](mailto:amoybill@gmail.com)

*I came to Xiamen Univ. in 1988 to study Chinese language and history for a year or two, but I've been here ever since because OEC opened was a window not only upon China's rich past but also its even greater hope for future.*

*Since 1921, XMU has been famous for pioneering education, and in 1956, decades before the West adopted distance education, OEC became China's first college for foreigners and offered an innovative international distance education program. Today, OEC's vision is greater than ever, thanks in part to the new Xiang'an campus, with a location offering its thousands of international students both a quiet, scholarly environment as well as convenient access to beautiful Xiamen city (formerly Amoy), recognized by UNESCO as one of the most livable cities on the planet.*

*OEC offers not just an education but also a vision of a better future, and the knowledge to help improve understanding and cooperation between China and the rest of the world.*

*Enjoy Amoy--and enjoy OEC!*

*Dr. William Brown  
School of Management, Xiamen University  
Feb. 18, 2014*





# CONTENTS

01—Why us ?	03—Long term Chinese program,
02—Highlights	03—Summer school (Eight-week Basic Chinese Class, Four-week Oral Chinese Class, China Study Program),
03—Course Index	06—Group Tailored Programs (Tailored Chinese class, Tailored China Study Program, Chinese Language Teacher Training),
12—Costs for study	07—Undergraduate Chinese program,
14—Application procedures	08—Master program,
15—New student guidance	09—Doctoral program,
17—Magic Xiamen	09—Distance education,
21—Programs in OEC	10—Complementary class for HMT & overseas Chinese students in preparation for college entrance examination,
22—Application Form	

## WHY US?

- Brand-new campus in Xiang'an
- Clean and quiet, perfect for study
- Library built like a palace
- Constant temperature natatorium & gymnasium
- Experienced Chinese teachers
- Enthusiastic language partners
- Pure halal restaurant
- Free rice for students
- Coffee house in class building
- E-card used all around the campus
- Free public bicycles, the 'Little Green'
- Only 2000 RMB/Year dormitory rent

- Xiangshan Temple, high up behind the mountain
- Close to the duty-free Taiwan-goods shopping mall in  
Dadeng island, unique in mainland China



# HIGHLIGHTS

## XIAMEN UNIVERSITY

**History:** Founded in 1921 by Tan Kah Kee, the first university in China established by overseas Chinese.

### Ranking:

Directly under the Ministry of Education  
Designated for the state key construction of the "211 Project" and the "985 Project".

**Students:** Over 40,000, including 20,314 undergraduates; 17,312 postgraduates; 2956 doctoral students and 2700 overseas students. XMU graduates have a high employment rate of 95%.

**Confucius Institutes:** Co-establishing 15 Confucius Institutes with universities in North America, Europe, Asia and Africa.

### Magnificent campuses:

Recognized as the most beautiful university in China, its three campuses cover 581 hectares, decorating the beautiful Xiamen bay like three marvelous pearls in a circle, magnificent and graceful.

## OVERSEAS EDUCATION COLLEGE

**History:** one of the oldest institutions in China offering Chinese language programs for overseas students (1956)

**Students:** Annual enrollment of more than 2000 overseas students from over 100 different countries, more than 30,000 overseas students have graduated from full-time and correspondent programs.

**Publications:** Overseas Chinese Education, Overseas Chinese Education News, Journal of International Chinese Studies, Research on the Development of Confucius Institutes, Quarterly Journal of Chinese Studies,

**Test centers:** Test centers for HSK, HSKK, BCT and HKC

Updated to March 31st, 2013



# COURSE INDEX

## LONG TERM CHINESE PROGRAM

**Semesters:** Sept. to Jan. (autumn), February to July (spring & 3rd term)

**Class hours:** Mon. to Fri., 18-24 class hours per week

**Certificates awarded:** Certificate of Study issued by OEC.

### Fees:

**Tuition fee:** 26,000RMB per year

**New student registration fee:** 400RMB

Annual dormitory rent: 2000RMB

More information about costs for study at P12

### Qualification to apply:

- Overseas students
- Healthy
- 18-60 years old
- High school graduate or above

**Deadline for application:** End of June for autumn semester, end of December for spring semester. Please contact us immediately if you apply after the deadline.

More information about application procedures at P14

### Courses:

**Brief introduction:** Students are divided into different levels based on the placement test taken at the beginning of the semester. All courses taken in a semester, including major and optional courses add up to 18-24 credits.

**Compulsory courses:** Elementary Chinese, Intermediate Chinese, Advanced Chinese, Oral Chinese, Chinese Listening, News Listening, Reading & Writing.

**Optional courses:** HSK lectures, Chinese Customs, Oral business Chinese, Modern Chinese Phonetics, Modern Chinese Grammar, Modern Chinese Rhetoric, Communication of Chinese and Foreign Culture, Peoples and Customs in China, Translation, Chinese Music, Chinese Calligraphy, I-go Game, Minnan Dialect (Hokkien), Chinese Kung fu, Chinese medicine. The optional classes available each term may vary depending on actual conditions.

## SUMMER SCHOOL

### EIGHT-WEEK BASIC CHINESE CLASS

**Length:** 8 weeks, early May to end of June

**Suitable applicants:** Beginners with little Chinese language background. Students whose Chinese levels are too advanced for this class can apply to join the regular long-term Chinese program.

**Certificates:** OEC Certificate of Study and transcripts

**Curriculum:** Chinese courses in the morning (Monday to Friday) and Chinese culture experience like calligraphy, paper cutting and Kung fu, 3 afternoons a week.

### Self-paid trips:

Self-paid trips to scenic spots in Xiamen, Quanzhou, Zhangzhou, Hakka village or Wuyi Mountain can be arranged if 15 or more students sign up for the tours.

### Fees:

**Tuition fee:** 9000RMB including tuition, textbooks & material copy, calligraphy or paper cutting tools. Those who join halfway should pay for their own textbooks.

**New student registration fee:** 240RMB

More information about costs for study at P12

**Deadline for application:** end of March. Please contact us immediately if you apply after the deadline.

More information about application procedures at P14

**Group tailored programs:** In case any institute or organization can gather more than 15 suitable applicants with similar Chinese levels, we can open a separate class for them. Tuition fee, courses, as well as time period can be further negotiated. More information about **Group tailored programs at P7.**

## FOUR-WEEK ORAL CHINESE CLASS

**Length:** 4 weeks in July

**Suitable applicants:** Beginners who have basic oral Chinese skills.

**Certificates:** Certificate of Study and transcripts issued by OEC

**Curriculum:** Oral Chinese course in the morning (Monday to Friday) and Chinese culture experience like calligraphy, paper cutting and Kung fu, 3 afternoons a week.

### Self-paid trips:

Self-paid trips to scenic spots in Xiamen, Quanzhou, Zhangzhou, Hakka village or Wuyi Mountain can be arranged if 15 or more students sign up for the tours.

### Fees:

**Tuition fee:** 5000RMB including tuition, textbooks & material copy, calligraphy or paper cutting tools. Those who join halfway should pay for their own textbooks.

New student registration fee: 240RMB

**Favorable terms:** Eight-week Basic Chinese Class + Four-week Oral Chinese Class = 13,000RMB

More information about **costs for study at P15**

**Deadline for application:** End of May. Please contact us immediately if you apply after the deadline.

More information about **application procedures at P12**

**Group tailored programs:** In case any institute or organization can gather more than 15 suitable applicants with similar Chinese levels, we can open a separate class for them. Tuition fee, courses, as well as time period can be further negotiated. More information about **Group tailored programs at P7**



## CHINA STUDY PROGRAM

**Length:** 4 weeks in July

**Suitable applicants:** Foreign college students with Chinese language beginner level and proficient English skills.

**Certificates:** Certificate of Study and transcripts issued by OEC

**Credits:** With approval of foreign universities or colleges, the certificate and transcripts issued by OEC can be transferred into credits in respective foreign institutes (appropriate amount: 4-6 credits).

### Curriculum:

Morning: Language courses with focus on listening and speaking.

Afternoon:

1. English lectures on Chinese economy, society, history, culture, and politics.
2. Chinese culture experience, such as calligraphy, paper cutting and Kung fu
3. Visits to foreign and local companies in Xiamen.

### Self-paid trips:

Self-paid trips to scenic spots in Xiamen, Quanzhou, Zhangzhou, Hakka village or Wuyi Mountain can be arranged if 15 or more students sign up for the tours.

### Fees:

**Tuition fee:** 9000RMB including tuition, Chinese culture experience, local visits, textbooks & material copy, calligraphy or paper cutting tools. Those who join halfway through the program should pay for their own textbooks.

**New student registration fee:** 240RMB

**Favorable terms:** Students finishing Eight-week Basic Chinese Class need to pay only 8000RMB for the China Study Program.

More information about **costs for study at P12**

**Deadline for application:** end of May. Please contact us immediately if you apply after the deadline.

More information about **application procedures at P14**

**Group tailored programs:** In case any institute or organization can gather more than 15 suitable applicants with similar Chinese levels, we can open a separate class for them. Tuition fee, courses, as well as time period can be further negotiated. More information about **Group tailored programs at P7**.



## GROUP TAILORED PROGRAMS

### TAILORED CHINESE CLASS

OEC is experienced and skillful in organizing and teaching short-term Chinese programs. It accepts more than 10 groups every year, number varying from 15 to hundreds of persons and ages from teenagers to middle-aged or senior.

The study time, courses, activities and fees can be decided through negotiation. The minimum number for a short-term group is 15 students of similar Chinese level. Usually, Chinese classes are set in the morning and culture courses or other activities in the afternoon.

Chinese culture experience available: Calligraphy, painting, movies, music, paper cutting, i-go (Chinese chess), Kong fu, etc.

Tours for choice: South Buddha Temple, Overseas Chinese museum, Hulishan Cannon Fort, Gulangyu Island, Wanshi Botanical Garden, Tan Kah Kee Museum in Jimei, Quanzhou city, Chongwu city, Hakka villages, Longkong Cave in Longyan, Wuyi Mountain, etc.

#### Costs per student for a typical Chinese class:

**Registration fee:** 240RMB

#### Tuition:

One week 2000RMB

An extra 1000RMB is charged for every additional week.

Four weeks 5000RMB

Eight weeks 9000RMB

≥12 weeks is charged by the price of long-term Chinese program, 13,000RMB

The price can be variable based on class hours, start date, courses, and teaching languages, etc. Tours, visits, textbooks and calligraphy or painting tools are charged in accordance with the actual costs.

More information about costs for study at P12

**Deadline:** At least two months before opening.

More information about application procedures at P14

### TAILORED CHINA STUDY PROGRAM

The program is specially designed for foreign college students who are interested in Chinese language, Chinese history, Chinese economy and Chinese culture. Foreign universities or colleges may send at least 15 students to Xiamen University for study. The courses, time and tuition fee of the program can be decided through further negotiation.

In this program, OEC is responsible to offer Chinese language training and English-language lectures on Chinese economy, culture, politics, and society. A staff member from the foreign university can be assigned to supervise the program or even teach 1-2 courses of the program. Certificate of Study and transcripts can be awarded after the program finishes.

OEC has set up regular China Study Programs with University of North Carolina at Chapel Hill, Council for Christian Colleges and Universities, Eckerd College and Bentley College in USA, as well as University College Utrecht in the Netherlands, etc.

**Registration fee:** 240RMB

**Tuition:** Usually double or triple that of a typical Chinese class

The price may vary based on class hours, start date, courses, and teaching languages, etc. Tours, visits, textbooks and calligraphy or painting tools are charged in accordance with the actual costs.

More information about costs for study at P12

**Deadline:** At least two months before opening.

More information about application procedures at P14

## CHINESE LANGUAGE TEACHER TRAINING

The program is specially designed for Chinese language teacher groups organized by foreign governments, universities, schools, and associations. The courses, time and tuition fee of the program can be decided through further negotiation.

OEC, founded in 1956, is one of the earliest institutions specializing in Chinese language teaching for overseas teachers and students. Half a century of development has provided the college with valuable experience in TCFL (Teaching Chinese as a Foreign Language) and training overseas Chinese language teachers; though this OEC has grown into a school with a strong group of experienced teachers and special teaching characteristics. In the past, it has trained thousands of Chinese language teachers from Indonesia, Thailand, the Philippines, Malaysia, Vietnam, Singapore, Australia, New Zealand, France, Holland and so on by both classroom teaching and distance instruction and is highly evaluated by those who have taken part in its programs.

Based on the requirements of the TCFL Certificate and the specific needs of overseas Chinese teachers, the Chinese Language Teachers' Training of OEC offers training in Chinese language, culture and teaching methods, which enables the students to master the basic knowledge and skills in Chinese language, to grasp TCFL theories and methods, to put what they have learned into teaching practice, and thus to improve their TCFL teaching ability and level.



## UNDERGRADUATE CHINESE PROGRAM

**Length of study:** 4 years

**Credits:** A total of 136 credits, 76 in 1st & 2nd years and 60 in 3rd & 4th years

**Tracks:** Business Chinese, Teaching Chinese as a Foreign Language (TCFL), Chinese culture

#### Degree and certificate:

Degree: Bachelor of Arts for completing the full program, diploma for first two year study.

Certificate: Graduation certificate for Chinese language major of Xiamen University

#### Fees:

**Tuition fee:** 26,000RMB per year

**New student registration fee:** 400RMB

**Annual dormitory rent:** 2000RMB

More information about costs for study at P12

#### Qualification to apply:

- Foreign nationals
- Healthy
- 18-60 years old
- High school graduate or above
- HSK 4 (≥240 points) for joining the 3rd year

**Application deadline:** end of June for autumn semester.

Please contact us immediately if you apply after the deadline.

More information about application procedures at P14

#### Courses:

**Open course:** Introduction to China

**Chinese language courses:** Chinese Language, Oral Chinese, Chinese Listening, Reading Comprehension (elementary, intermediate and advanced)

#### Major courses of all three tracks:

**Chinese Culture:** Modern and Contemporary Chinese Literature, Introduction to Chinese Culture, Ancient Chinese Literature, Communication of Chinese and Foreign Culture, Contemporary Chinese Grammar, a total of 11 credits

**Chinese Education:** Modern Chinese, Theory and Method

of Teaching Chinese as the Second Foreign Language, Educational Psychology, a total of 11 credits

**Business Chinese:** Basic Principles of Economics, Practices of International Trade, Currency and Banking, International Trade, International Finance, Marketing, Management, a total of 24 credits

**Optional courses:** chosen based on personal preferences.

**Internship:** 3 credits

**Thesis:** 6 credits

Actual course structure may be adjusted during the course.

#### Qualification for directly joining the third year:

1. Students with HSK 5 certificate or above can apply to join the third year of the undergraduate Chinese program.

2. Students with HSK certificate

## MASTER PROGRAM

**Length of study:** 2-5 years, full time.

#### Majors:

Linguistics and Applied Linguistics (referred to as LAL below), 3 years

Teaching Chinese as a Foreign Language (TCFL), 3 years  
Master of Teaching Chinese to Speakers of Other Languages (MTCOSOL), 2 years

**New student registration fee:** 400RMB

#### Tuition fee:

20,000RMB/year for LAL & TCFL

30,000RMB/year for MTCOSOL

More information about costs for study at P12

#### Qualifications for application:

1. Foreign nationals or overseas Chinese.
2. BA degree holders.

Notes: Overseas Chinese need to take the National Entrance Examination while foreigners can enroll without exams but should first master the Chinese language.

**Deadline for application:** June 30th

#### Contact:

**Enrollment for master programs:** Please refer to contact information of Admissions Office of Xiamen University on the back cover.

#### Teaching affairs for master programs:

Ms. Wang Bihua, teaching secretary for MA programs

Tel: +86-592-2187707

Email: wangbh@xmu.edu.cn



## DOCTORAL PROGRAM

**Length of study:** 3-7 years, full time.

Major: Teaching Chinese as a Foreign Language (TCFL)

**Registration fee:** 400RMB

#### Tuition fee:

24,000RMB/year, totally 72,000RMB

More information about costs for study at P12

#### Qualifications for application:

1. Foreign nationals or overseas Chinese.
2. MA degree holders.

**Hints:** Overseas Chinese need to take the National Entrance Examination while foreigners can enroll without exams but should first master the Chinese language.

**Deadline for application:** June 30th

#### Contact:

**Enrollment for master programs:** Please refer to contact information of Admissions Office of Xiamen University on the back cover.

#### Teaching affairs for master programs:

Ms. Wang Bihua, OEC teaching secretary for MA programs

Tel: +86-592-2187707

Email: wangbh@xmu.edu.cn

## DISTANCE EDUCATION

#### Majors:

Chinese-language-related majors

Chinese language with three tracks, namely Chinese culture, Teaching Chinese as a Foreign Language (TCFL) and business Chinese

Chinese language and literature

**Business-related majors:**

International economics and trade

Accounting

Hotel management

Marketing

**Length of study:** A complete credit system is applied. Undergraduate study requires 3-5 years, including diploma period and BA period.

#### Degree and certificate:

Degree: Bachelor of Arts after completing the full program and thesis defense.

Certificate: *Graduation certificate of Xiamen University*

**Qualification:** Foreign nationals or overseas Chinese, proficient in Chinese, high school graduates. Those with relevant diploma can be exempt from diploma period and begin their study directly from BA period.

#### Method of study:

**Individual:** Online coursewares, real-time video classroom, homework, Q&A, discussion makes it possible



## DISTANCE EDUCATION

to freely arrange the time and place for your own study.

**Teaching spots:** Teaching spots open in student-concentrated areas where teaching or guidance is offered. More information about locations of teaching spots is available by consulting the college.

**Deadline for application:** No deadline for application. More information about application procedures at P14



## COMPLEMENTARY CLASS FOR HMT & OVERSEAS CHINESE STUDENTS IN PREPARATION FOR COLLEGE ENTRANCE EXAMINATION

**Brief introduction:** With the approval of the Ministry of Education, Xiamen University has offered complementary classes for Hong Kong, Macao, Taiwan (HMT) & overseas Chinese students in preparation for college entrance examination ) in mainland China since 1993.

**Suitable applicants:** High school graduates from HMT or overseas.

**Length of study:** One year or one semester, full time

**Semesters:** February to May (spring), September to January (autumn)

**Courses:** Chinese, mathematics, English plus geography & history for art direction or physics & chemistry for science direction

### Fees:

Tuition fee: 13,000RMB per semester

Textbook costs: 500RMB/year

More information about costs for study at P12



**Deadline for application:** End of June for autumn semester, end of December for spring semester. Please contact us immediately if you apply after the deadline.

More information about application procedures at P14

### Notes:

1. Qualification check for the college entrance examination is not included in our program and you should consult Liankao test centre at 020-38627813 (Guangzhou) or 0592-5718585/5703107 (Xiamen) if you have any question about your qualification.

2. Forum: <http://www.liankaobbs.com>





# COSTS FOR STUDY

## TUITION STANDARDS FOR DIFFERENT CATEGORIES

### Chinese programs:

- Eight-week Basic Chinese Class, 9000RMB tuition fee, 240RMB registration fee
- Four-week Oral Chinese Class, 5000RMB tuition fee, 240RMB registration fee
- Long term Chinese program, 26,000RMB/year tuition fee, 400RMB new student registration fee
- Chinese BA, 26,000RMB/year tuition fee, 400RMB new student registration fee
- MA, 60000RMB full program total tuition fee
- PHD, 24000RMB/year tuition fee
- Distance education of Chinese-language-related majors, 7600RMB for the diploma period, 7100RMB for the BA period, 3200RMB for the thesis period, 100RMB/credit for taking certain courses selectively, 50RMB registration fee.
- Distance education of Business-related majors, 12000RMB for the diploma period, 12000RMB for the BA period, 200RMB/credit for taking certain courses selectively, 50RMB registration fee.

**Complementary class for HMT & overseas Chinese students:** 13,000RMB/semester.

### Total cost estimate

(Taking long term Chinese for example):

- Tuition: per semester, 26000RMB per year
- Registration fee: 400RMB for new students
- Rents: 2000RMB per year for a place in dormitories (double rooms) on Xiang'an campus, excluding water, electricity and management costs.
- Meals: About 600-900RMB per month, using XMU e-card in school dining halls
- Textbooks: About 300RMB a semester, depending on courses taken
- Physical examination: about 500RMB
- Residence permit: 400RMB for RP less than 360 days
- Insurance: Comprehensive Insurance for Overseas Students, 450RMB per year
- Internet: 35RMB per month for China Telecom broadband in dormitories
- Roughly about 40,000RMB per year, a reasonable amount compared to many other universities in China..

### Notes:

1. Please pay your TUITION and REGISTRATION fees to the XMU bank accounts, keep the bank's receipt and change it into a formal XMU invoice upon registration.
2. According to relevant regulations of XMU, tuition fee or registration fee of the current semester are not refundable once the academic term begins.
3. Holders of most types of foreign bank cards are allowed to draw out only a maximum of 2500RMB per day from foreign bank account in Xiamen. It is also not possible to pay the tuition fee using foreign bank cards. As a result, we recommend our students to bring approximately 20,000RMB in cash with them upon arrival. They may also open a local bank account on campus, and wire money into the account from overseas if they need more.

## BANK ACCOUNTS OF XIAMEN UNIVERSITY

### Industrial and Commercial Bank of China (for civil payment only)

Beneficiary Name: Xiamen University

Beneficiary's bank: Xiamen University Branch, Industrial and Commercial Bank of China

Beneficiary A/C Number: 4100021709024904620

Swift code: ICBKCNBJSM

### Bank of China

Beneficiary Name: Xiamen University

Beneficiary's bank: Xiamen University Branch, Bank of China

Beneficiary A/C Number: 428658381176

Swift code: BKCHCNBJ73A



# APPLICATION PROCEDURES

1. New Account: OEC web – Login – New account (email as username)
2. Program Type: Login and choose the type of program you plan to take. Please make your choice carefully, for there is only one chance for each account.
3. Completing Information: Fill in all blanks like personal information, contact information & program options and upload the required documents, e.g., passport, photos & certificates.
4. Submitting Application: You can submit your application after the above steps. The system will tell you which step need to be completed if it fails.
5. Application Status: Application is completed after the above steps. You can see the status of your application and the progress of OEC admission in the column, "application status".
6. A qualifications check is performed as soon as your application is received. We will notify you of the qualifications-check result by email/telephone. Please call us if you don't receive a reply from us one week after the application.
7. After the qualifications check, we will submit both the admission notice and the visa application form (Jw202) on your behalf to the university for approval and mail them to the address in your application form as soon as they are ready. Usually it takes 30-45 days to receive the documents after your application is approved.
8. Bring in person your passport, photos, admission notice and visa application form to the local Chinese embassy for Student Visa (X visa, it should be changed into residence permit within 30 days after entry). The physical examination report and other documents might be required to obtain the Student Visa in some countries. You can do it in a local qualified hospital and bring all original health check reports to XMU for the visa change. The physical Examination Record of Foreigner can be available at <http://oec.xmu.edu.cn/file/Health.doc>.
9. Bring your passport, original physical examination record (if available), 10 two-inch photos, the admission notice, visa application form (Jw202), graduation certificate and HSK certificate (if available) to OEC for registration on dates stipulated in the admission notice. Please come to OEC as soon as you enter China, or your visa might run out before it is changed to the Residence Permit.

## Notes:

If you apply after the deadline, please submit the application form and contact us via email or telephone. If your application is approved, please do the health check at a local qualified hospital and come to XMU with a tourist or visiting visa. Remember to go through registration procedures as soon as you enter China. Usually, we can help you apply for the residence permit within one month after registration.

# NEW STUDENT GUIDANCE

## WAYS TO REACH XIANG'AN CAMPUS

You can tell the taxi driver to go to Overseas Education College in Kunlun Bldg., Xiang'an Campus of Xiamen University ( ), marked as "A" in XMU map.

Map of Xiang'an Campus: <http://oec.xmu.edu.cn/file/XMUXAMAP.jpg>

If you need us to pick you up at the airport, please fill the service card and send it to us by fax or email at least one week in advance. The OEC driver will charge transportation fee depending on the number of passengers. You can download the pickup service card at: <http://oec.xmu.edu.cn/file/serviceCARD.doc>

There are stores on campus, and so it is unnecessary for new students to bring too many things for everyday use. You can buy a cell phone SIM card on arrival from any of the three companies on campus, namely China Mobile, China Unicom and China Telecom.

## VISA & RESIDENCE PERMIT

With the admission notice and visa application form (JW201 /JW202) issued by Xiamen University, students can apply for an X visa by submitting other documents like passport, physical examination report (required in some countries) and photos to the local Chinese embassy or consulate. Usually the X visa must be converted into a residence permit within 30 days after entering China.

Residence permit (RP) is a resident certificate for foreign students issued by the Chinese Public Security Bureau, usually valid for half a year or one year allowing multiple entries. More information about RP application can be found in the visa guidance sheet received on arrival.

## XMU E-CARD

XMU e-card--- XMU e-card is an IC card issued by Xiamen

University, combining the functions of a student/staff card, library card, dining card, etc. With the XMU e-card, you can live and study in XMU easily without taking too much cash or cards. XMU e-card also includes information about your student/staff number, name, e-card account, your photo and other personal information, which is useful when entering certain areas or borrowing books.

## DORMITORY

Xiang'an campus provides student dormitories with four bedrooms, four balconies, two bathroom stalls and one living room, accommodating two students in each bedroom. The dormitories are equipped with facilities like air-conditioner, wooden sofa, tea table, safe and water heater for shower. Students need to buy/bring their own bedding (sheets, pillows) and clean their bedrooms, the living room and the bathroom. The stairwells are cleaned regularly and there are security guards 24 hours at the gate. The rent for a place in the dormitory is only **2000RMB per year** plus 1000RMB deposit, not including the fees for water, electricity and management. There is no need to reserve dormitory rooms prior to arriving since students will be assigned a room after finishing registration procedures. Early arrivers should take care to find their own accommodations before the semester starts. Students can apply for internet access from the offices of China Telecom or China Mobile on campus, costing 40RMB per month.



## DINING HALLS

There are two dining halls on campus, namely Jingfeng and Fengting. You can enjoy delicious food of different flavors as well as Halal food in Jingfeng cafeteria by using e-card.



## INSURANCE

According to the Ministry of Education, overseas students for long term study in China are required to buy Group Integrated Insurance.

## CHINESE LANGUAGE PARTNER

In order to promote communications between Chinese and overseas students, enhance friendship while boosting their social and linguistic abilities, OEC recruits a large group of Chinese language partner volunteers offering help for foreign students in the following ways:

**Pre-study Consulting:** provide detailed information about China, Xiamen and Xiamen University from the perspective of a Chinese university student.

**Orientation:** at the beginning of each semester, help overseas students finishing registration and accommodation check-in procedures.

**Mutual Learning:** teach and learn from each other, enjoy complementary advantages in language.

**Local Knowledge:** help overseas students to accommodate local environment, including accommodation, food, shopping, sports and entertainment facilities.

**Sports and Cultural Activities:** encourage overseas students to participate in various kinds of sports, cultural and community activities

## CHINESE CORNER

Every Thursday night, in the courtyard of Overseas Education college, a good place to practice your oral Chinese and to meet Chinese friends!

## COLORFUL LIFE

Xiang'an cultural festival, Turkey day, Chinese corner, Chinese language partners, Spring festival, mid-autumn day, Songkran Festival, Loi Krathong, Dragon Boat Festival, Christmas, Chinese Kung Fu experience, Xiamen Marathon, XMU Foreign Language Karaoke Contest.

## SPORTS

There are playgrounds and stadiums for basketball, volleyball, tennis, badminton as well as parallel bars, gymnasium and swimming pools in Xiang'an campus. Besides the XMU sports meeting and XM marathon, there are sporting competitions held occasionally in Xiamen University. OEC football/volleyball team is one of the best in Xiamen University. We have won the XMU Football Championship many times and were the Fujian Football champion in Xiamen in 2005.

## "CHINESE BRIDGE" CHINESE PROFICIENCY COMPETITION

The CCTV 'Chinese Bridge' Competition is held by China Central Television and National Office of Teaching Chinese as a Foreign Language, and is organized by CCTV-4 – the International Channel. Participants are non-Chinese citizens and non-native Chinese speakers who currently study in China. The competition is conducted

in 25 specified areas in China including Xiamen University, and proceeds in two stages: the preliminary competition and the final competition. From 2008, it has been held every year around May 7th to August 31st. The Chinese Bridge competition provides overseas students a platform to show their Chinese proficiency and share their Chinese learning experiences. 'Chinese Bridge' built a bridge of friendship between a developing China and all the overseas friends who love Chinese language and Chinese culture.

## LOCAL TOURS

In order to provide students with more chances of Chinese cultural experience, the college arranges self-paid local tours to Gulangyu, Nanputuo, Jimei school village, Zhongshan Road, Hakka village, and Wuyi Mountain, etc.

## STUDENT ASSOCIATIONS

In XMU, there are numerous student associations for all kinds of purposes. You can always find those who share the same interests as you. Posters about student activities and lectures are in front of Jingfeng dining hall.

Website: <http://slh.xmu.edu.cn/>

## XMU ALUMNI ASSOCIATION

The Chief XMU Alumni Association was set up in 1940, a legally registered social organization. In every province of China, XMU has its alumni branch association. XMU is now building a world alumni system gradually. Up until now, it has established overseas alumni associations in Indonesia, Japan, Malaysia, the Philippines, Thailand, Singapore, America and Australia. You can contact those organizations after graduation and they will keep in touch with you and update the latest information about XMU. The contact information of those associations can be found on the website of XMU Alumni Association <http://alumni.xmu.edu.cn>

## SCHOLARSHIPS

There are mainly three kinds of scholarships, namely the Chinese government scholarship (CSC), Confucius institute scholarship (CIS) and XMU scholarship. Information about scholarship applications can be available by consulting admissions office of Xiamen University (back cover).

In order to encourage and sponsor self-paid students of excellent academic performance and good virtue, the college set up the OEC Chinese Scholarship and also the honorary award of "excellent OEC students". Please consult the OEC student affairs section if you need more information.



# MAGIC XIAMEN

## Glorious Titles

“UNCHS Human Settlement Award”, “The Most Congenial City In China”, “China’s Top Tourism City”, “International Garden City”, “National Hygiene City”, “National Garden City”, “National Model City for Environmental Protection”, “National Advanced Civilized City”

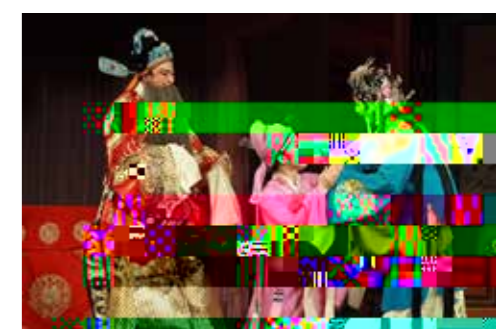
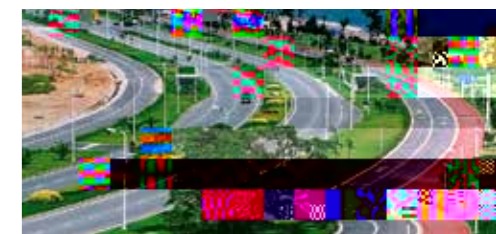
## History

Xiamen, better known as Amoy in western literature, originally consisted Tong’an County in 282 A.D. In the Song dynasty, an administrative system, called “Jiaheli,” was set up here. In 1650, near the end of Ming Empire, Koxinga, or Zheng Chenggong, were all stationed here and used it as a base against the Dutch colonists in Taiwan and Manchus from the north, naming it Siming Island, or "Remembering the Ming". The name of the city reverted to "Siming" after the 1912 Xinhai Revolution and then changed to Xiamen. Xiamen became a provincial city in 1949, then a municipality and finally a Special Economic Zone in 1980.

## Language

Minnan dialect (also called Hokkien or Taiwanese), is the native language in Taiwan, Xiamen, Quanzhou, Zhangzhou and other places nearby. It was gradually created in the past centuries when people migrated from northern China to the south as a result of wars, natural disasters, or territory exploration, especially in the Jin, Tang, and Song dynasties. During the process, the ancient Chinese language melded with the native languages of the Yi and Yue people in the south as well as foreign languages like Japanese, English and Southeast Asian languages. As a result, the Minnan dialect maintains many sentences, phrases, words and custom uses of those languages, and is widely referred to as “the living fossil of ancient Chinese”. Many linguists around the world put much emphasis on the Minnan dialect due to its importance in research on ancient Chinese language, economy and society, as well as ancient language and cultural exchanges.

In the past decades, people from non-Hokkien-speaking regions continually moved to Xiamen city due to its rapid economic growth. Meanwhile the Xiamen government promoted Mandarin in public occasions and Mandarin gradually became the main official language in Xiamen. This makes it more convenient for economic and cultural exchanges, but at the same time also o - o□ same" □ amMsamedia due e cul M□ d□ □ gov e fm i li□ " age □

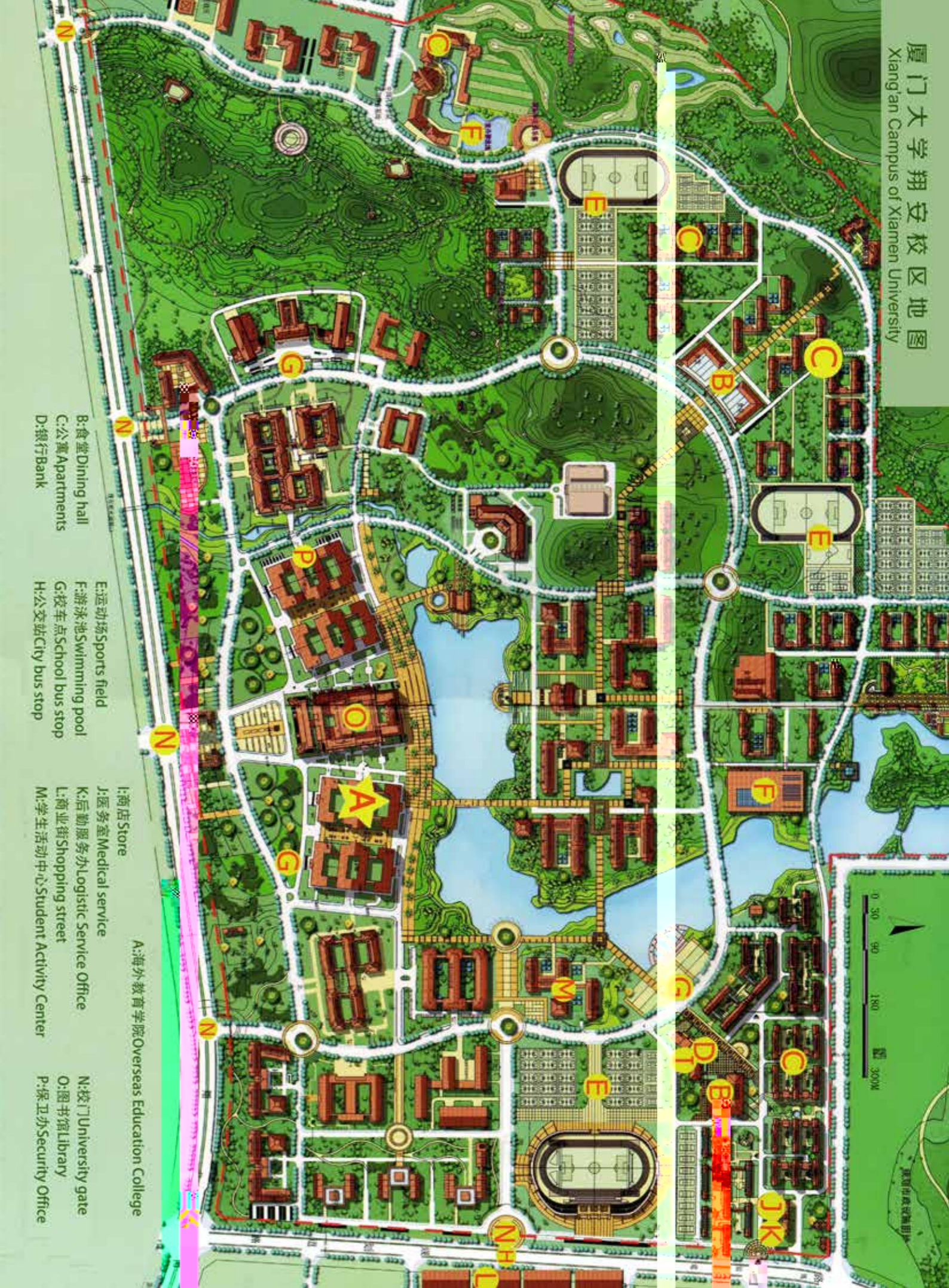




### Natural Geography

Xiamen is situated on the southeast coast of Fujian Province, facing Taiwan across the Strait. Xiamen comprises Xiamen Island proper, Gulangyu Islet and the coastal part of north Jiulong River, covering an area of more than 1500 square kilometers and a sea area of 300 square kilometers. The topography of Xiamen is characterized by a gradual descent from the south to the north, with the northwestern part being relatively flat and the southern part mountainous and hilly. □ Provi□ " nd u h t





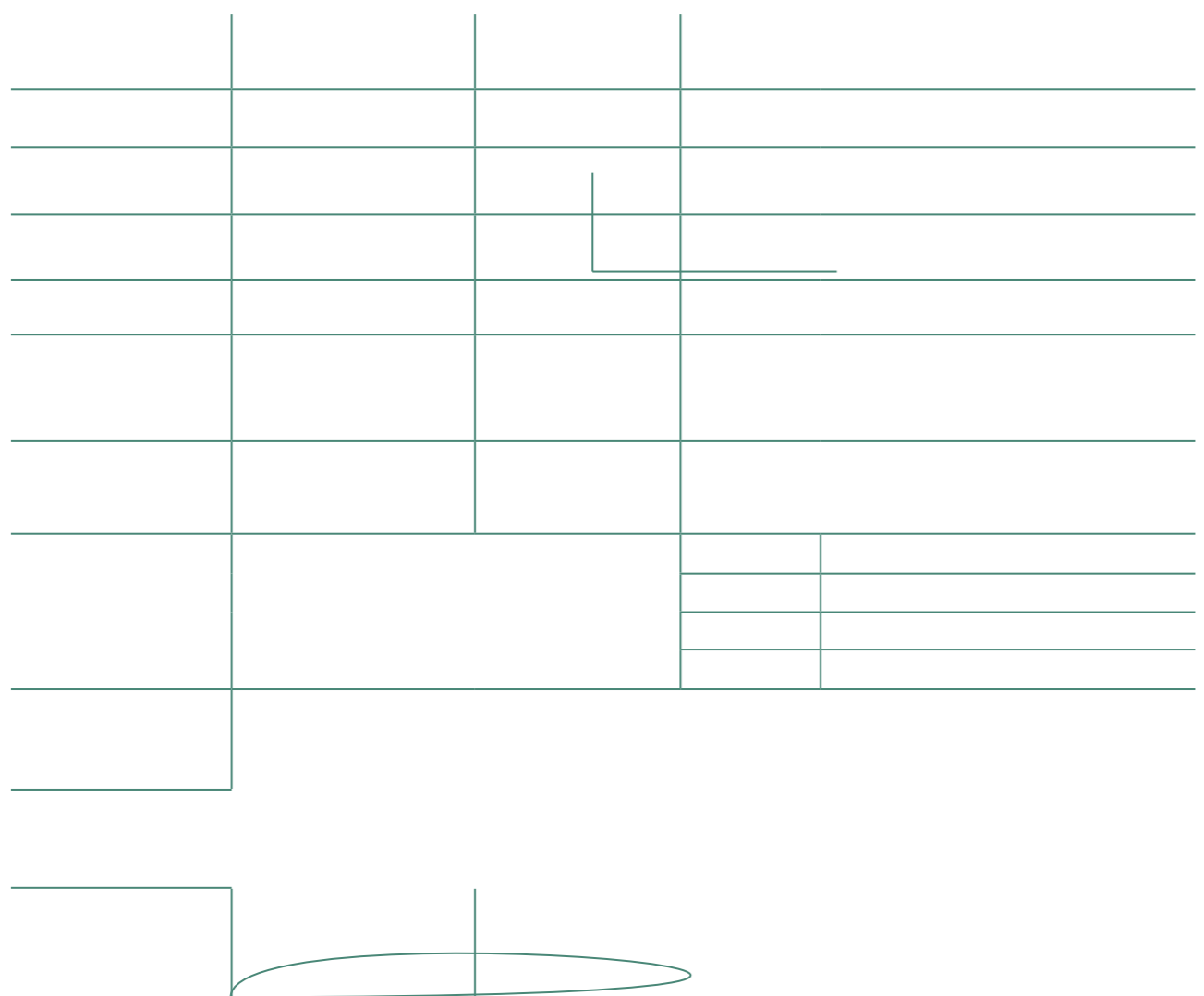
B:食堂 Dining hall  
C:公寓 Apartments  
D:银行 Bank

E:运动场 Sports field  
F:游泳池 Swimming pool  
G:校车点 School bus stop  
H:公交站 City bus stop

I:商店 Store  
J:后勤服务办 Logistic Service Office  
L:商业街 Shopping street  
M:学生活动中心 Student Activity Center

N:校门 University gate  
O:图书馆 Library  
P:保卫办 Security Office

A:海外教育学院 Overseas Education College





## XIAMEN UNIVERSITY

### Overseas Education College of Xiamen University

In charge of teaching and enrollment for Chinese programs  
Address: Overseas Education College, No.2 building of the main building complex, Xiang'an Campus of Xiamen University  
South Xiang'an Road, Xiamen, Fujian province, China, 361102  
Tel: 0086-592-2186211/2182451

Fax: 0086-592-2093346

Website: <http://oec.xmu.edu.cn>

Email: [oec@xmu.edu.cn](mailto:oec@xmu.edu.cn)

Wechat: xmuoec

### Admissions Office of Xiamen University

In charge of enrollment for non-Chinese programs and all MA & PHD programs.  
Address: admissions office, 3rd floor of Jiageng 3 building,  
Siming campus, Xiamen University, China 361005

Tel: 0086-592-2188888, 2184792

Fax: 0086-592-2180256

Email: [admissions@xmu.edu.cn](mailto:admissions@xmu.edu.cn)

Web: <http://admissions.xmu.edu.cn>



We chat